

Modified Supplemental Amount At-Risk & Dropout Prevention Application for 2026-27

**Cedar Falls Board of Education
January 12th, 2026**





every student
EVERY DAY

Application Purpose

Plan to meet students where they are, work together towards graduation, and teach them skills they need to be successful in life.

Review annual goal performance & plan to spend supplemental At-Risk and Dropout Prevention funds.

Serve and identify as many at-risk students as possible while being good stewards of District funds.

Glossary

At-Risk Student: Any student needing additional supports who is not meeting or expected to meet the established goals of the educational program (academic, social-emotional, career and/or vocational).

At-risk students include but are not limited to the following categories:

- homeless youth
- dropouts
- returning dropouts
- potential dropouts



Glossary

Returning Dropout: Any resident student in grades 7-12 who left school and is now returning.

Potential Dropout: Any resident student who demonstrates poor school adjustment as indicated by two or more of the following:

- High rate of absenteeism , truancy, or frequent tardiness;
- Limited or no extra-curricular participation or identification with school;
- Discipline issues resulting in suspension/exclusion;
- Poor grades including, but not limited to, failing in one or more subjects; or
- Low achievement in reading or math which reflects 2 or more years below grade level.

How are students identified as At-Risk?

Decision Ed Early Warning Systems

- 20+ risk factors
 - Attendance
 - Absence Codes
 - Activity Involvement
 - Behavior Infractions
 - Dropout
 - English Learner Status
 - Failing Grades
 - Homelessness
 - Local Assessments
 - Low SES
 - Special Education
 - Substance Abuse

Risk Levels Assigned

- Low Risk
 - Less than 8 risk factors
- Attention Needed
 - 8-15 risk factors
- Warning!
 - More than 15 risk factors
- Data is updated and risk levels reassessed automatically within Decision Ed.

At-Risk & Dropout Service Summary

3 Categories of Service

Emotional &
Physical Safety



Skill Building

School
Engagement



Program Goals & Objectives

- 1. The District will continue efforts to ensure that all schools provide physical and emotional safety for students and staff.**
 - a. District teams will reduce the number of reported student behavior infractions by 10% as compared to last school year.
 - b. District teams will expand access to supportive adult connections so that 100% of At-Risk students have an identified trusted adult at school.
- 2. The District will provide high quality instruction and interventions for academic and life skills.**
 - a. District teams will increase the number of targeted durable skills interventions being provided to At-Risk students by 10%.
 - b. Cedar Falls teachers will continue to receive annual training opportunities in high quality reading interventions and durable skills.



Program Goals & Objectives, cont'd

3. The District will increase opportunities for school engagement of At-Risk students.

- a. District teams will work to increase school attendance rates for At-Risk students by 10% as compared to last school year.
- b. District teams will work to remove barriers and increase student participation in school-based activities, so that 90% of At-Risk students are actively engaged in at least one school club, sport, activity, or performance.

Activities to Target Goals

Emotional & Physical Safety

- School Based Therapists
- Student Success Coaches
- School Resource Officers
- Intervention Center

Skill Building

- Credit Recovery
- Reading Interventions
- Summer Learning
- Durable Skills

School Engagement

- Attendance Meetings
- After School Programming
- Alternative Program
- Educational Support Center



Emotional & Physical Safety

Mental Health Services

\$154,505

- **School Based Therapists**
 - Contracted services with Black Hawk Grundy Mental Health
 - 5 Therapists (2 full time, 3 part time) serve students at school
 - Every school has at least one full day of therapy per week
- **Students Served during 2024-25 School Year**
 - 193 students in grades K-12
 - 2,774 therapy sessions



Emotional & Physical Safety



Behavior Intervention & Support

\$511,104

- **Student Success Coaches**
 - 5 Elementary, 2 Junior High
 - Provide support with behavior intervention and response, attendance, teaching durable skills in 1:1 and small group
- **High School At-Risk Program**
 - 1 Teacher at High School
 - Success Center
 - Credit Recovery
 - 1:1 and small group skill development for At-Risk students



Emotional & Physical Safety



Behavior Intervention & Support Cont'd

- **Intervention Center**
 - 1 Teacher at Educational Support Center (ESC)
 - Short term, supervised out-of-school suspension
 - Restorative conversation and reintegration planning
- **School Resource Officers**
 - Officers Brooke Helgeson & Brian Johannsen serve all buildings
 - Connect with students and staff
 - Support building and district safety plans
 - Maintain safety in buildings and at school sponsored events

Skill Building



Academic Skills

\$518,901

- Online Curriculum for Credit Recovery
 - Alternative Program , Summer School, Success Center
- Elementary Reading Teachers (portion of 8 teachers)
 - Small group reading interventions
- Elementary Summer Reading Program
 - Free summer reading practice to prevent “summer slide”
- Secondary Summer Credit Recovery Program
 - Opportunity for students to make up work, earn credits, and prepare for next grade level

Skill Building cont'd

Durable Skills

Tiger Ten!

- Research from America Succeeds
- Learning for Staff & Students
- Elementary Roll Out
 - Classroom Learning
 - Conference Reports
 - Student Self Reflection
 - Small Group Interventions
 - Student Success Coaches
 - School Counselors

THE TIGER TEN

learn your stripes!



CHARACTER

Behaving in a way that is respectful to others and responsible for yourself.

COLLABORATION

Working together to complete tasks or solve problems.

COMMUNICATION

Effectively listening and sharing thoughts, feelings, or ideas with others.

CREATIVITY

Using your imagination to creatively solve problems, make art, or tell stories.

CRITICAL THINKING

Gathering information, asking questions, and thinking carefully before making decisions.

FORTITUDE

Courage and grit to keep trying, even when something is hard.

GROWTH MINDSET

Believing that you can learn new skills and get better if you keep trying.

LEADERSHIP

Being a helper, taking healthy risks, and showing others how to do the right thing.

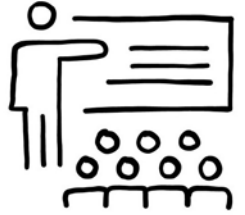
METACOGNITION

Thinking about your thinking and managing your needs.

MINDFULNESS

Self-awareness; noticing what's happening around you and inside of you.

School Engagement



Targeted At Risk Interventions

\$57,197

ECHOES After School Program

- 2 Junior High Facilitators
 - Homework help & makeup work completion
 - Free engaging activities & clubs
 - Open to any student
 - Snacks & transportation provided

Attendance Meetings

- Student Success Coaches
- Building Principals
 - Assisting families with getting kids to school

School Engagement



Alternative Paths to Graduation

\$360,537

Educational Support Center (ESC)

- Program Coordinator
 - Alternative Program, Excel, TAP, Intervention Center
- School Counselor
 - Serves students in all programs
- Secretary
 - Wears many hats!
- Alternative Program Teachers
 - Provide an alternate path to graduation
 - Served 46 students in 2024-25
 - Graduated 18 students!

Staff Training & Program Utilization

Training

- New teacher orientation
- Weekly Collaborative Team Time
- Six days of professional development per year
 - Conference style, Contracted Speakers, Building Leadership Teams, Admin

Utilization of Programs

- Success Coaches
- School Counselors
- Student Services Directors
- Building Administrators

Program Evaluation & Qualifications

Evaluation

- Decision Ed Data Analysis
 - Administrative Council data dives
 - Building Leadership Team goal setting and review
 - Student Services Director annual performance reviews

Qualifications of Personnel

- Student instruction and Staff Learning
 - Provided by licensed teachers, counselors, administrators, and coaches
- Guests or volunteers
 - Anyone coming into buildings to support learning or activities must complete a volunteer form & assurances



Budget Summary

Total Budget	\$ 1,602,244
Less Projected At-Risk Funds	\$ 165,709
Less Carryover Funds	\$0
Less 25% from General Fund (as required)	\$ 359,134
Total Request for 2026-27	\$1,077,401

Modified Allowable Growth Annual Comparison

	FY22	FY23	FY24	FY25	FY26	FY27
Dropout & At-Risk Total Budget	\$1,419,517	\$1,452,208	\$1,514,779	\$1,571,526	\$1,599,089	\$1,602,244
Less General Use Program ming	\$0	\$0	\$0	\$0	\$0	\$0
Less Carryover Funds - Dropout	\$0	\$46,025	\$0	\$0	\$0	\$0
Less Carryover Funds - At-Risk	\$0	\$48,973	\$0	\$0	\$0	\$0
Less Projected At- Risk Funding	\$137,626	\$143,073	\$150,761	\$165,362	\$173,505	\$165,709
Sub-Total	\$1,281,891	\$1,214,137	\$1,364,018	\$1,406,164	\$1,425,584	\$1,436,535
Less 25% funded via General Fund	\$320,473	\$303,534	\$341,005	\$351,541	\$356,396	\$359,134
Mod. Allowable Growth Amount	\$961,418	\$910,603	\$1,023,013	\$1,054,623	\$1,069,188	\$1,077,401
Tax Rate per \$1000/assessed value	\$0.46214	\$0.43771	\$0.45414	\$0.46188	\$0.44571	\$0.44913

Thank you for
supporting our
At-Risk Students!

What questions do you
have for me?