




CEDAR FALLS COMMUNITY SCHOOL DISTRICT



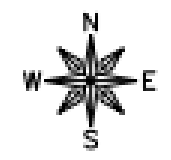
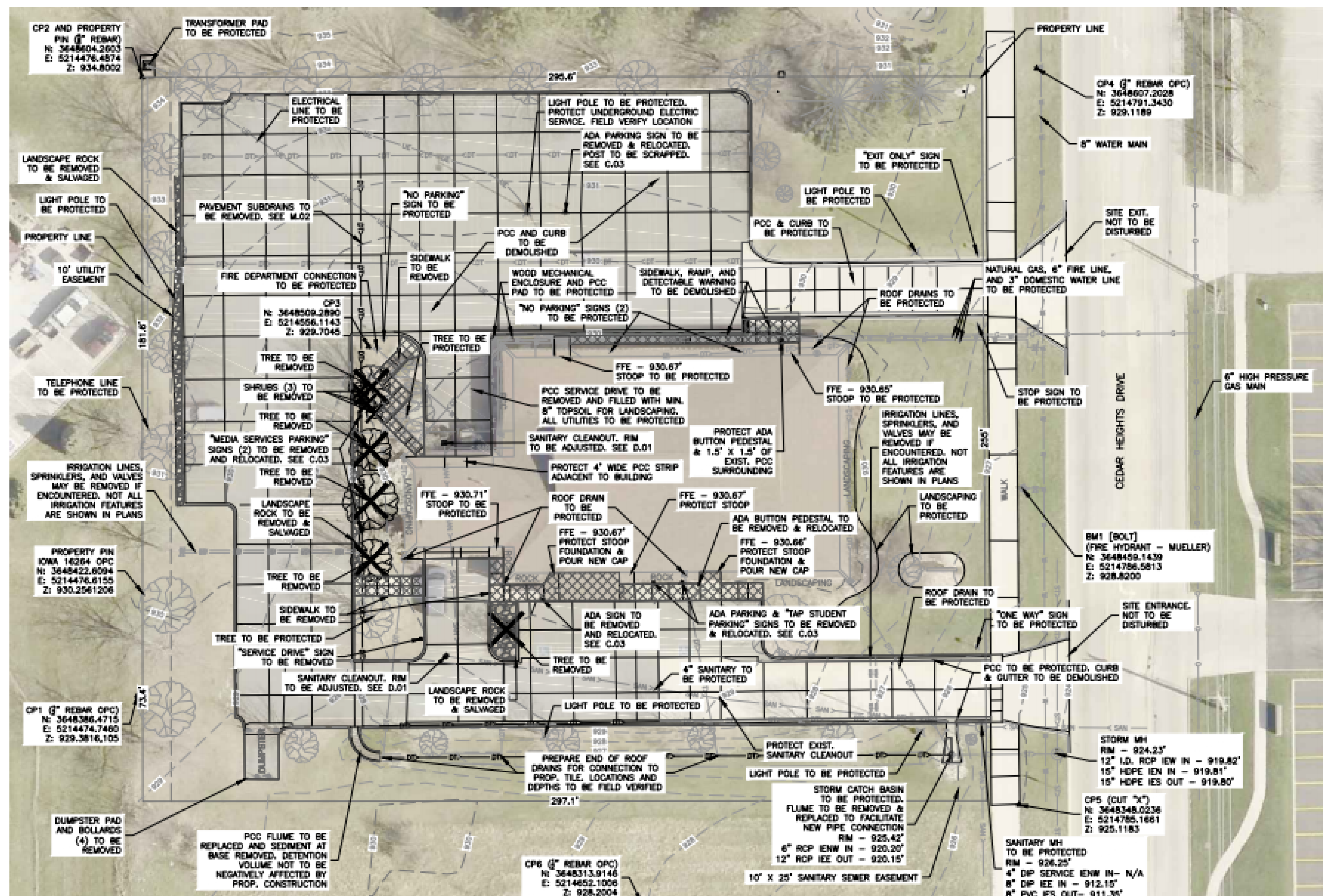
Education Support Center Parking & Drive Improvements

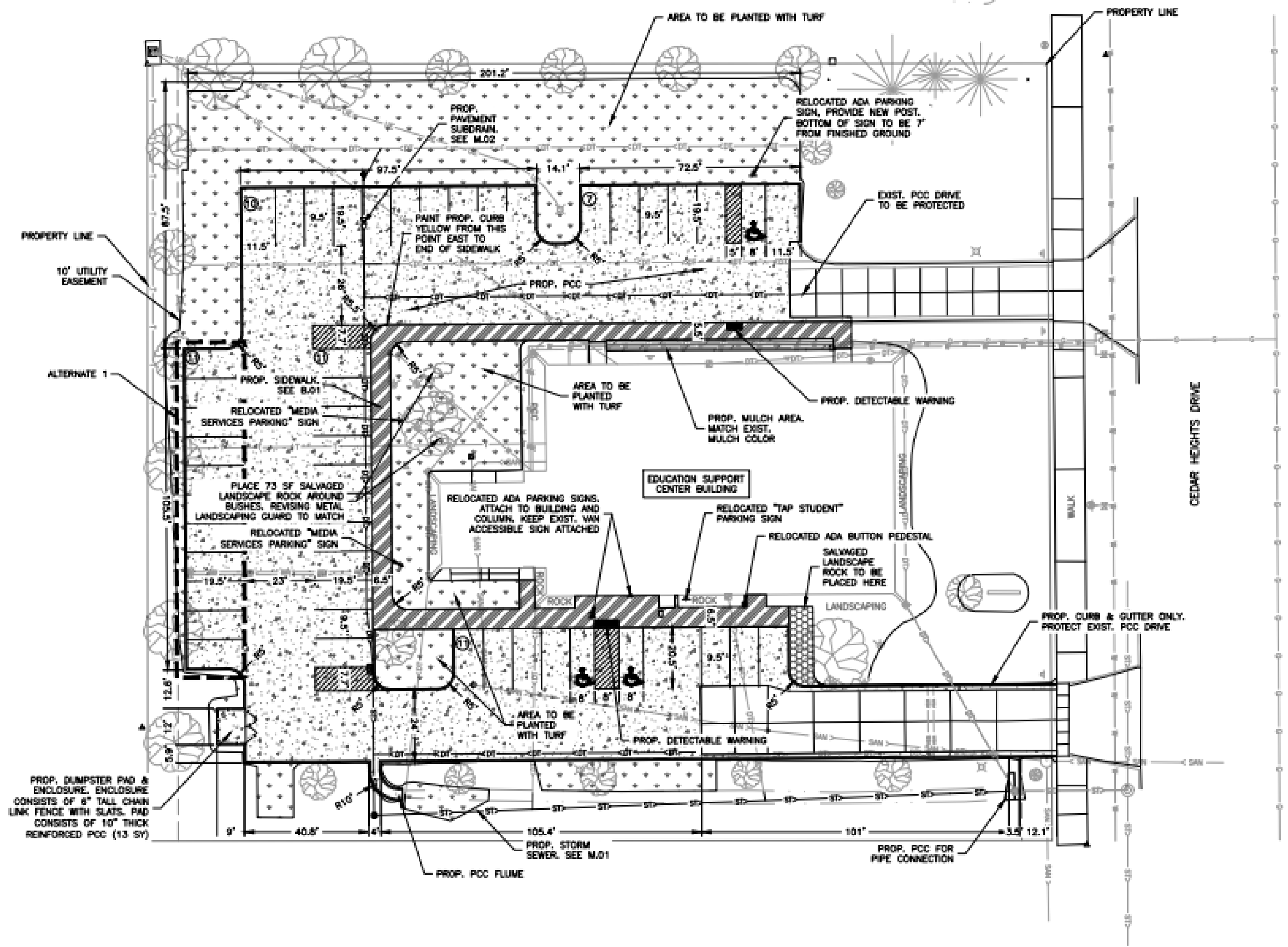
LEGEND:

-  EXIST. PCC PAVEMENT TO BE REMOVED
3,423 SF
-  EXIST. PCC SIDEWALK TO BE REMOVED
171 SF
-  LANDSCAPE ROCK TO BE SALVAGED & REINSTALLED
273 SF

NOTES:

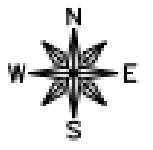
1. ALL EXISTING FEATURES & UTILITIES BOTH INSIDE AND OUTSIDE OF THE PROPERTY LINE TO BE PROTECTED UNLESS NOTED OTHERWISE.
2. ALL TREES & LANDSCAPING FEATURES TO BE PROTECTED UNLESS NOTED OTHERWISE. NO MORE THAN 6" OF FILL TO BE PLACED OVER TREE ROOTS AND NO MORE THAN 6" TO BE EXCAVATED OVER TREE ROOTS.
3. FULL-DEPTH SAW CUT REQUIRED FOR ALL PCC REMOVALS.
4. IRRIGATION SYSTEM IS NOT FUNCTIONAL. ANY COMPONENTS ENCOUNTERED CAN BE REMOVED, INCIDENTAL.





- LEGEND:**
- PROP. 7" PCC PAVEMENT ON 6" GRANULAR SUBBASE 2,155 SY BASE BID / 224 SY ALT 1
 - PROP. 5" PCC SIDEWALK PAVEMENT ON 4" GRANULAR SUBBASE 282 SY
 - SALVAGED LANDSCAPE ROCK 273 SF
 - PROP. HARDWOOD MULCH, 6" THICK 275 SF
 - PROP. TURF WITH MIN. 8" TOPSOIL 0.29 AC BASE BID / 0.02 AC ALT 1

- NOTES:**
1. ALL EXISTING FEATURES & UTILITIES BOTH INSIDE AND OUTSIDE OF THE PROPERTY LINE TO BE PROTECTED UNLESS NOTED OTHERWISE.
 2. ALL TREES & LANDSCAPING FEATURES TO BE PROTECTED UNLESS NOTED OTHERWISE. NO MORE THAN 6" OF FILL TO BE PLACED OVER TREE ROOTS AND NO MORE THAN 8" TO BE EXCAVATED OVER TREE ROOTS.
 3. ALL RELOCATED AND NEW SIGNS TO BE 3" OFF BACK OF WALK OR BACK OF CURB.
 4. **BASE BID:**
 PROP. PARKING: 39 STALLS INC. 3 ADA
 PROP. PAVEMENT (INC. SIDEWALK): 22,047 SF
 PAVEMENT DEDUCTION: 10,303 SF
- ALTERNATE 1:**
 PROP. PARKING: 50 STALLS INC. 3 ADA
 PROP. PAVEMENT (INC. SIDEWALK): 24,063 SF
 PAVEMENT DEDUCTION: 8,288 SF



Budget

BASE BID

NO.	CODE	DESCRIPTION	QUANTITY	UNIT	UNIT PRICE	TOTAL PRICE
1	2010-C	CLEARING AND GRUBBING	1	LS	\$ 1,500.00	\$ 1,500
2	2010-D-3	TOPSOIL, OFF-SITE	266	CY	\$ 18.00	\$ 4,788
3	2010-E	EXCAVATION, CLASS 10	430	CY	\$ 9.50	\$ 4,085
4	2010-G	SUBGRADE PREPARATION	2,703	SY	\$ 0.75	\$ 2,027
5	2010-I	SUBBASE, 6" THICK	2,343	SY	\$ 7.50	\$ 17,573
6	2010-I	SUBBASE, 4" THICK	360	SY	\$ 5.00	\$ 1,800
7	4020-A-1	STORM SEWER, TRENCHED, HDPE DW, 12" DIA.	213	LF	\$ 40.00	\$ 8,520
8	4020-A-1	STORM SEWER, TRENCHED, PERF. HDPE DW, 12" DIA.	39	LF	\$ 40.00	\$ 1,560
9	4020-D	REMOVAL OF STORM SEWER, PVC, 4" DIA.	511	LF	\$ 3.00	\$ 1,533
10	4040-A	SUBDRAIN, PERF. HDPE DW, 4" DIA.	17	LF	\$ 10.00	\$ 170
11	4040-A	SUBDRAIN, HDPE DW, 6" DIA.	13	LF	\$ 11.00	\$ 143
12	4040-A	SUBDRAIN, PERF. HDPE DW, 6" DIA.	402	LF	\$ 11.00	\$ 4,422
13	4040-C	SUBDRAIN CLEANOUT, TYPE A-2, 6" DIA.	1	EA	\$ 450.00	\$ 450
14	6010-A	MANHOLE, NYLOPLAST, 24" DIA.	1	EA	\$ 2,800.00	\$ 2,800
15	6010-B	INTAKE, SW-501	1	EA	\$ 3,500.00	\$ 3,500
16	6010-G	CONNECTION TO EXISTING INTAKE	1	EA	\$ 750.00	\$ 750
17	6010-999-A	CLEANOUT ADJUSTMENT, MINOR	2	EA	\$ 600.00	\$ 1,200
18	7010-A	PAVEMENT, PCC, 7" THICK	2,155	SY	\$ 52.00	\$ 112,060
19	7010-A	PAVEMENT, PCC, 10" THICK, REINFORCED	13	SY	\$ 95.00	\$ 1,235

Budget Continued

20	7030-A	REMOVAL OF SIDEWALK	171	SY	\$ 8.00	\$ 1,368
21	7030-E	SIDEWALK, PCC, 5" THICK	282	SY	\$ 65.00	\$ 18,330
22	7030-G	DETECTABLE WARNING	26	SF	\$ 45.00	\$ 1,170
23	7030-999-A	STOOP FOUNDATION	2	EA	\$ 1,500.00	\$ 3,000
24	7040-H	PAVEMENT REMOVAL	3,423	SY	\$ 8.00	\$ 27,384
25	8020-C	PAINTED PAVEMENT MARKINGS, DURABLE	1	LS	\$ 2,000.00	\$ 2,000
26	8040-A	REMOVE AND SALVAGE SIGN	1	EA	\$ 150.00	\$ 150
27	8040-B	REMOVE AND REINSTALL SIGN PER PLAN	5	EA	\$ 200.00	\$ 1,000
28	8040-C	STEEL BREAKAWAY SIGN POSTS	1	EA	\$ 75.00	\$ 75
29	8040-999-A	REMOVE AND REINSTALL ADA BUTTON PEDESTAL PER PLAN	1	EA	\$ 200.00	\$ 200
30	9030-C	PLANTS	1	LS	\$ 10,000.00	\$ 10,000
31	9030-999-A	SALVAGE AND REINSTALL LANDSCAPE ROCK	273	SF	\$ 1.00	\$ 273
32	9030-999-B	HARDWOOD MULCH, 6" THICK	275	SF	\$ 0.75	\$ 206
33	9040-E	TEMPORARY RECP, TYPE 3	13	SY	\$ 6.00	\$ 78
34	9040-Q-2	EROSION CONTROL MULCHING, HYDROMULCHING	0.29	AC	\$ 10,000.00	\$ 2,900
35	9040-T-1	INLET PROTECTION DEVICE, SURFACE APPLIED	3	EA	\$ 150.00	\$ 450
36	9060-999-A	DUMPSTER ENCLOSURE, CHAIN LINK FENCE	1	LS	\$ 800.00	\$ 800
37	11,020-A	MOBILIZATION	1	LS	\$ 15,500.00	\$ 15,500
38	11,050-A	CONCRETE WASHOUT	1	LS	\$ 500.00	\$ 500

BASE BID TOTAL \$ 255,500

Alternate – West Parking Lot

ALTERNATE 1 - WEST PARKING

NO.	CODE	DESCRIPTION	QUANTITY	UNIT	UNIT PRICE	TOTAL PRICE
1	2010-D-3	TOPSOIL, OFF-SITE	24	CY	\$ (18.00)	\$ (432)
2	2010-G	SUBGRADE PREPARATION	257	SY	\$ 0.75	\$ 193
3	2010-I	SUBBASE, 6" THICK	257	SY	\$ 7.50	\$ 1,928
4	7010-A	PAVEMENT, PCC, 7" THICK	224	SY	\$ 52.00	\$ 11,648
5	9040-Q-2	EROSION CONTROL MULCHING, HYDROMULCHING	0.02	AC	\$ (10,000.00)	\$ (200)

ALTERNATE 1 TOTAL \$ 13,768

Budget Total

Base Bid Total	\$255,500
<u>Alternate 1 Total</u>	<u>\$ 13,768</u>
Total Budget	\$269,268



Timeline

- January 25, 2021– Presentation to Board of Education
- February 8, 2021– Public Hearing
- February 17, 2021– Bid Opening
- February 22, 2021– Award Contract
- Week June 7, 2021 – Begin Construction
- August 6, 2021 – Complete Construction