

CEDAR FALLS HIGH SCHOOL TIGER PERFORMANCE CENTER - PHASE II

PROJECT OVERVIEW

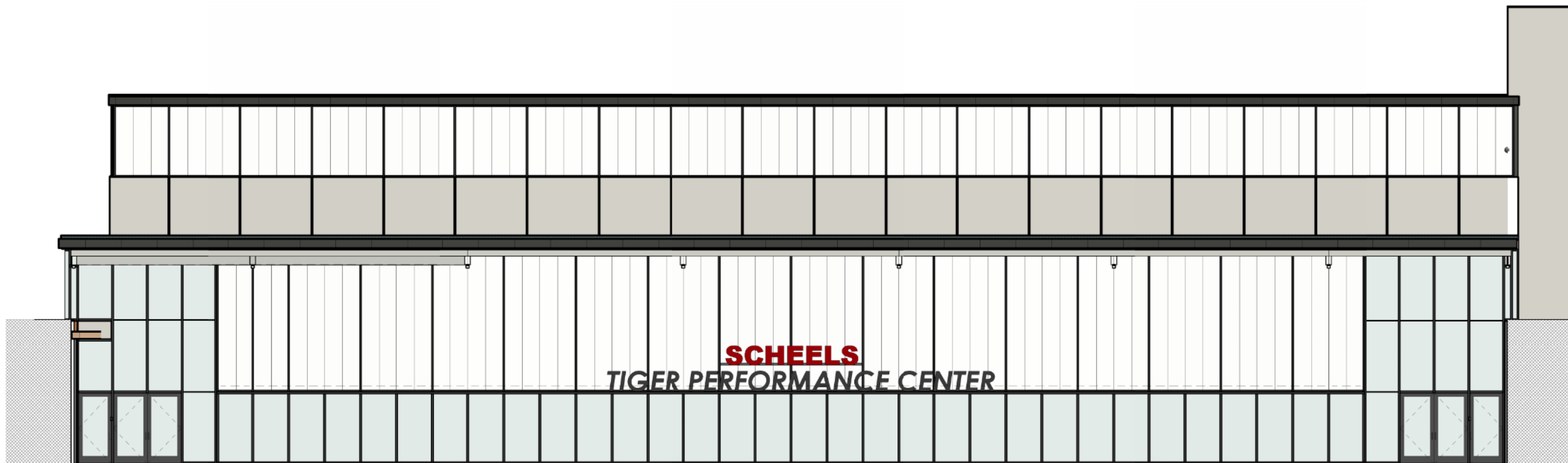
INVISION

APRIL 2026

SOUTH ENTRANCE



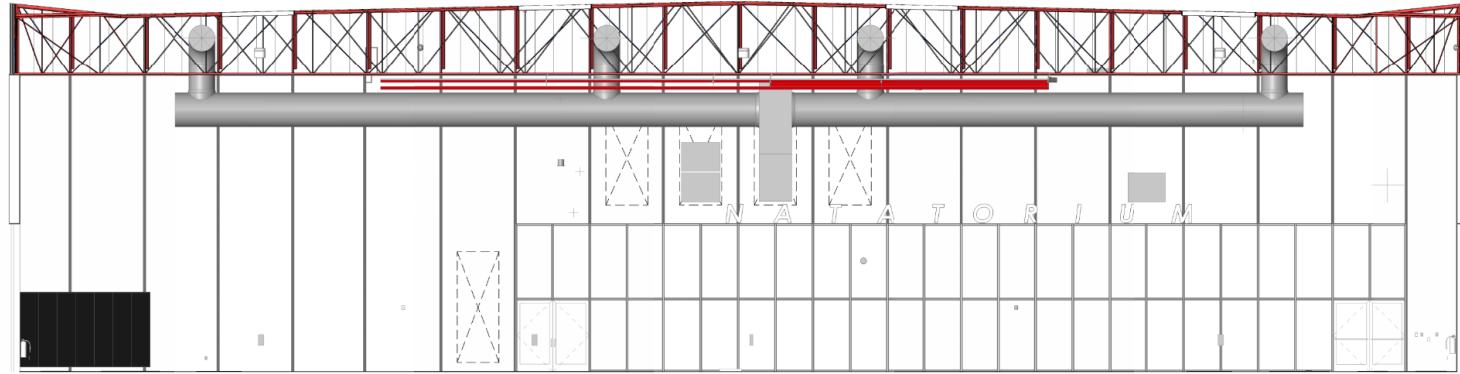
ELEVATIONS



EXTERIOR WORK:

- PAINT
- LIGHTING
- SIGNAGE

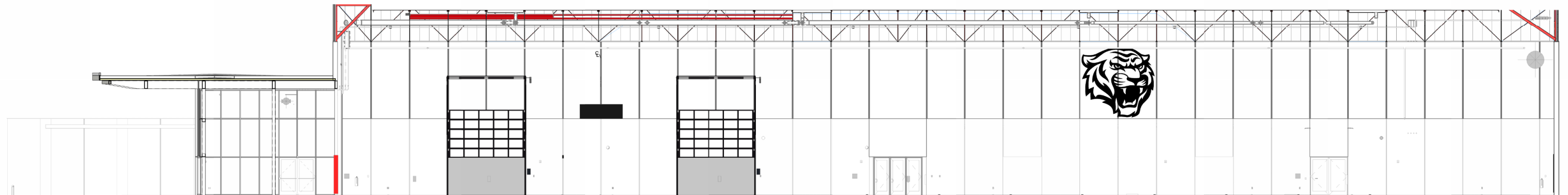
ELEVATIONS



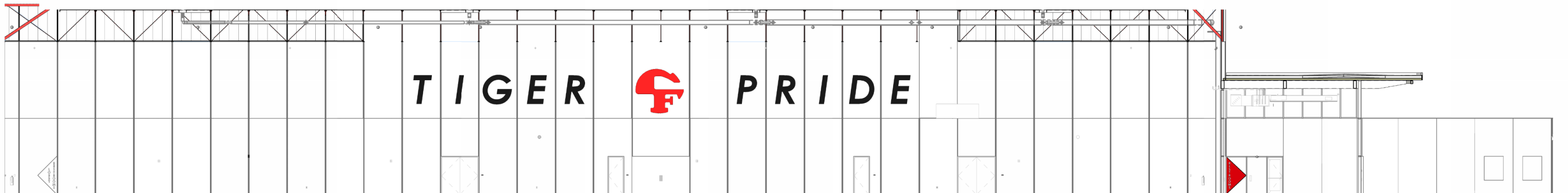
3 TIGER PERFORMANCE CENTER NORTH OVERALL
1/8" = 1'-0"

INTERIOR WORK:

- PAINT
- HVAC
- LIGHTING
- SIGNAGE / GRAPHICS
- OVERHEAD DOORS

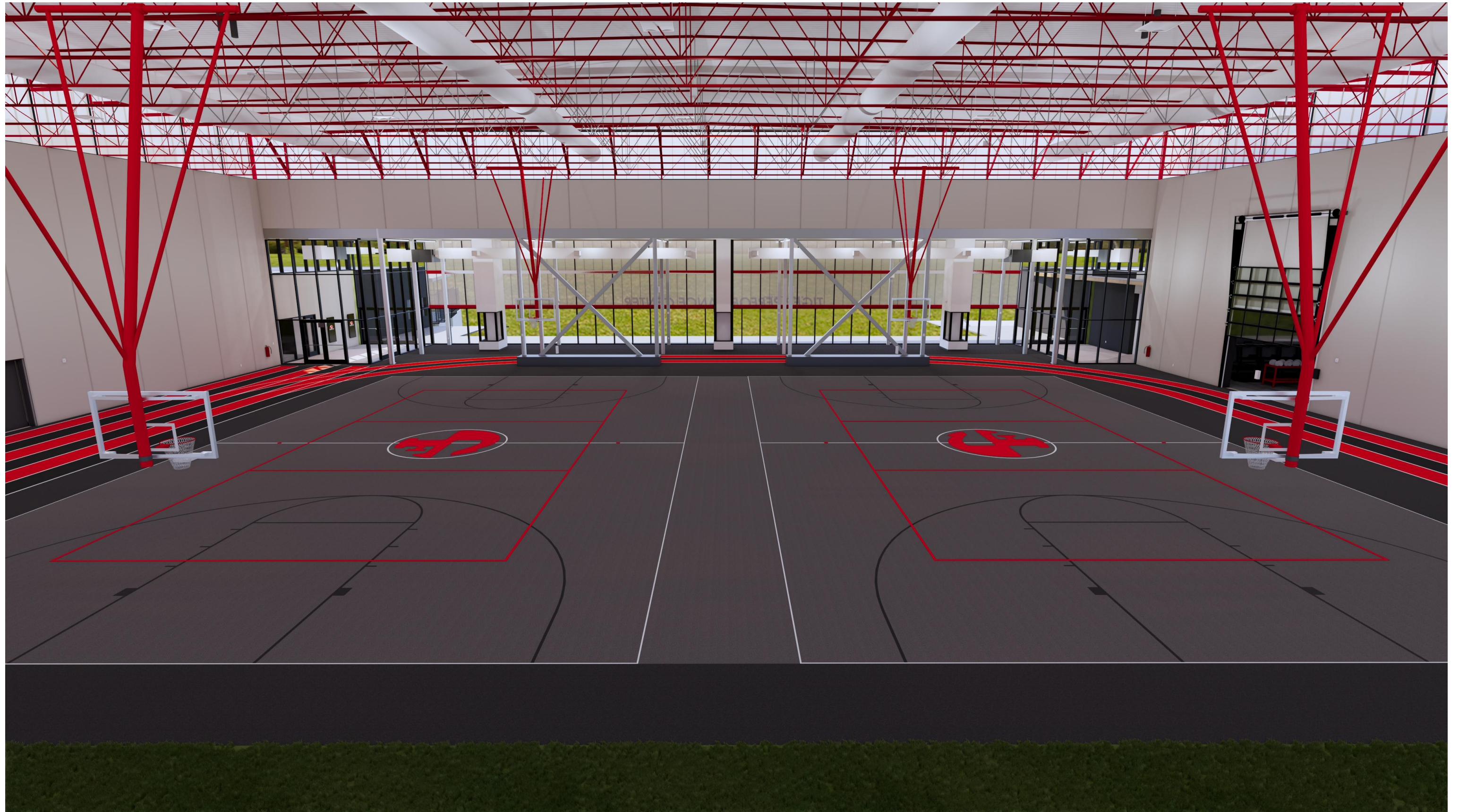


2 TIGER PERFORMANCE CENTER WEST OVERALL
1/8" = 1'-0"



1 TIGER PERFORMANCE CENTER EAST OVERALL
1/8" = 1'-0"

ATHLETIC COURTS



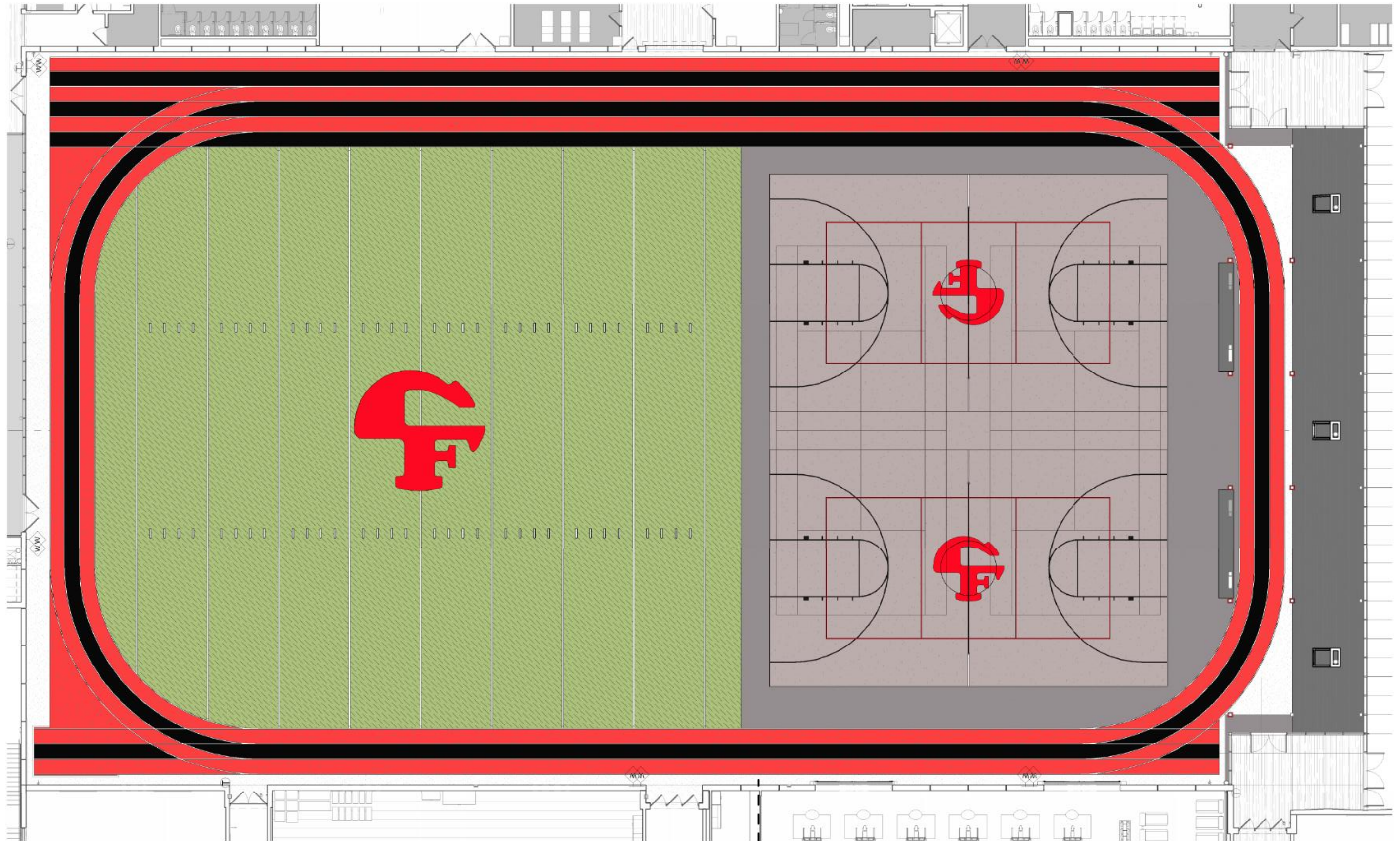
OVERALL



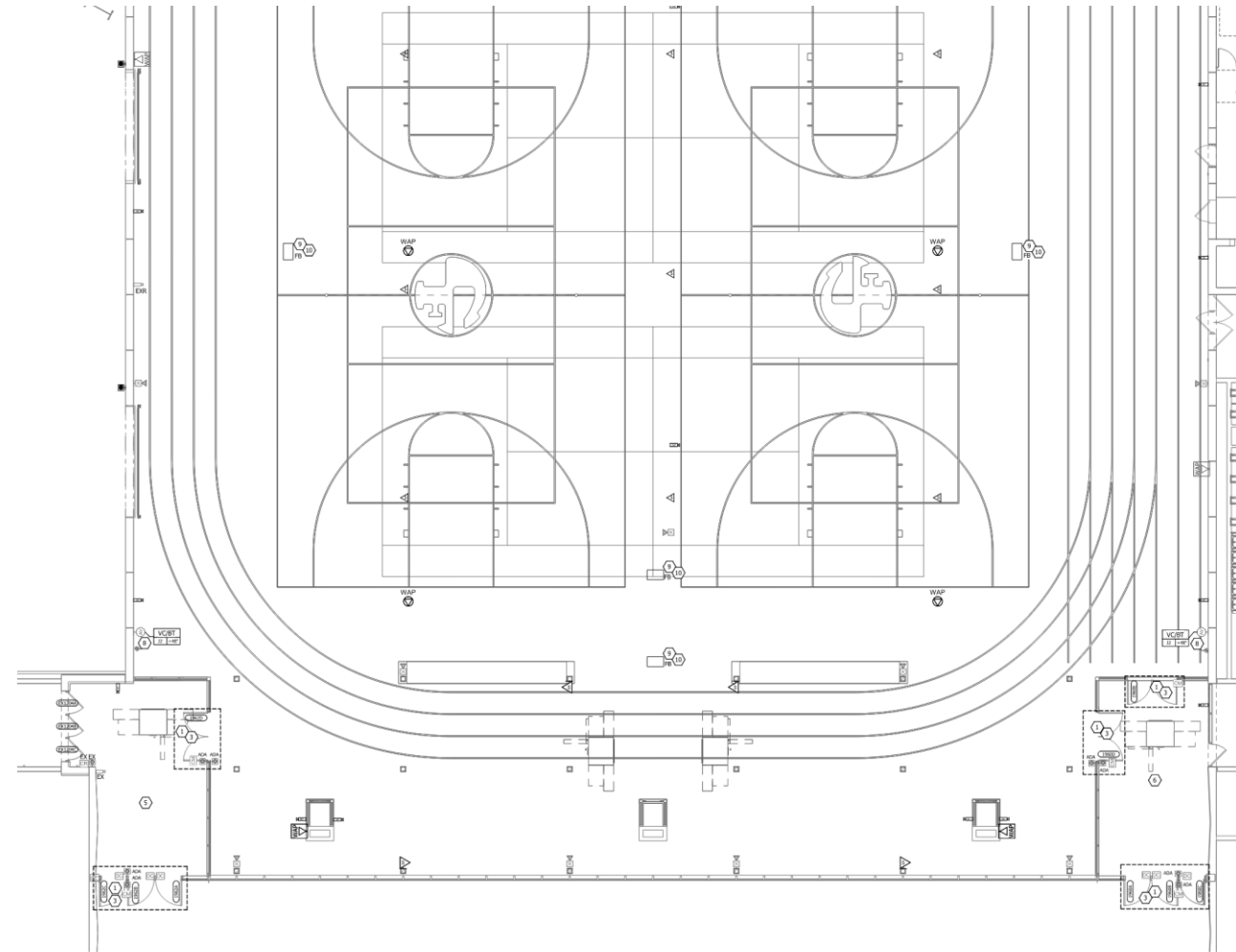
TURF FIELD



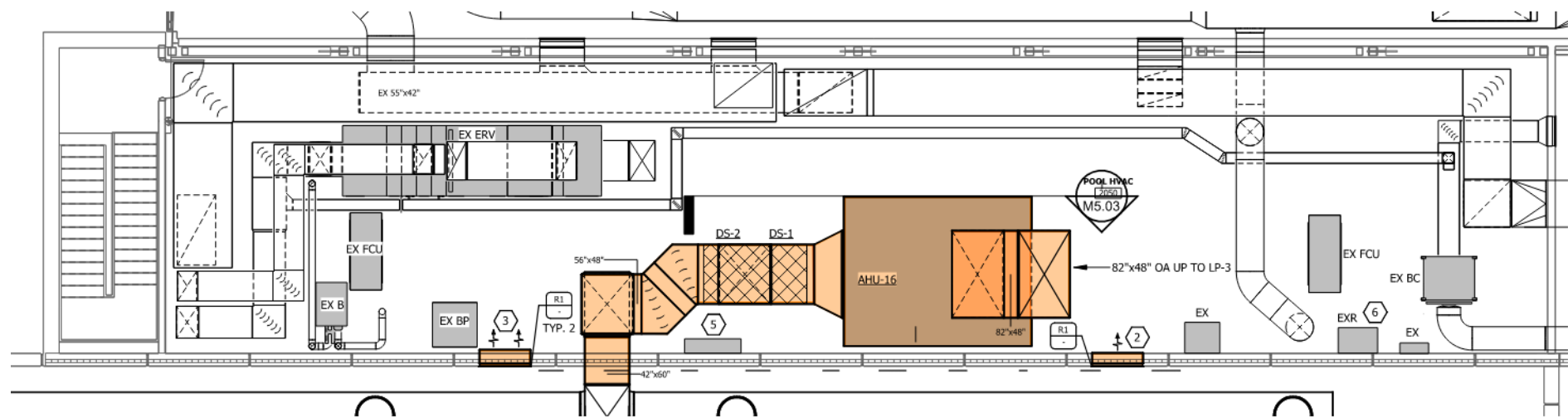
FLOORING LAYOUT



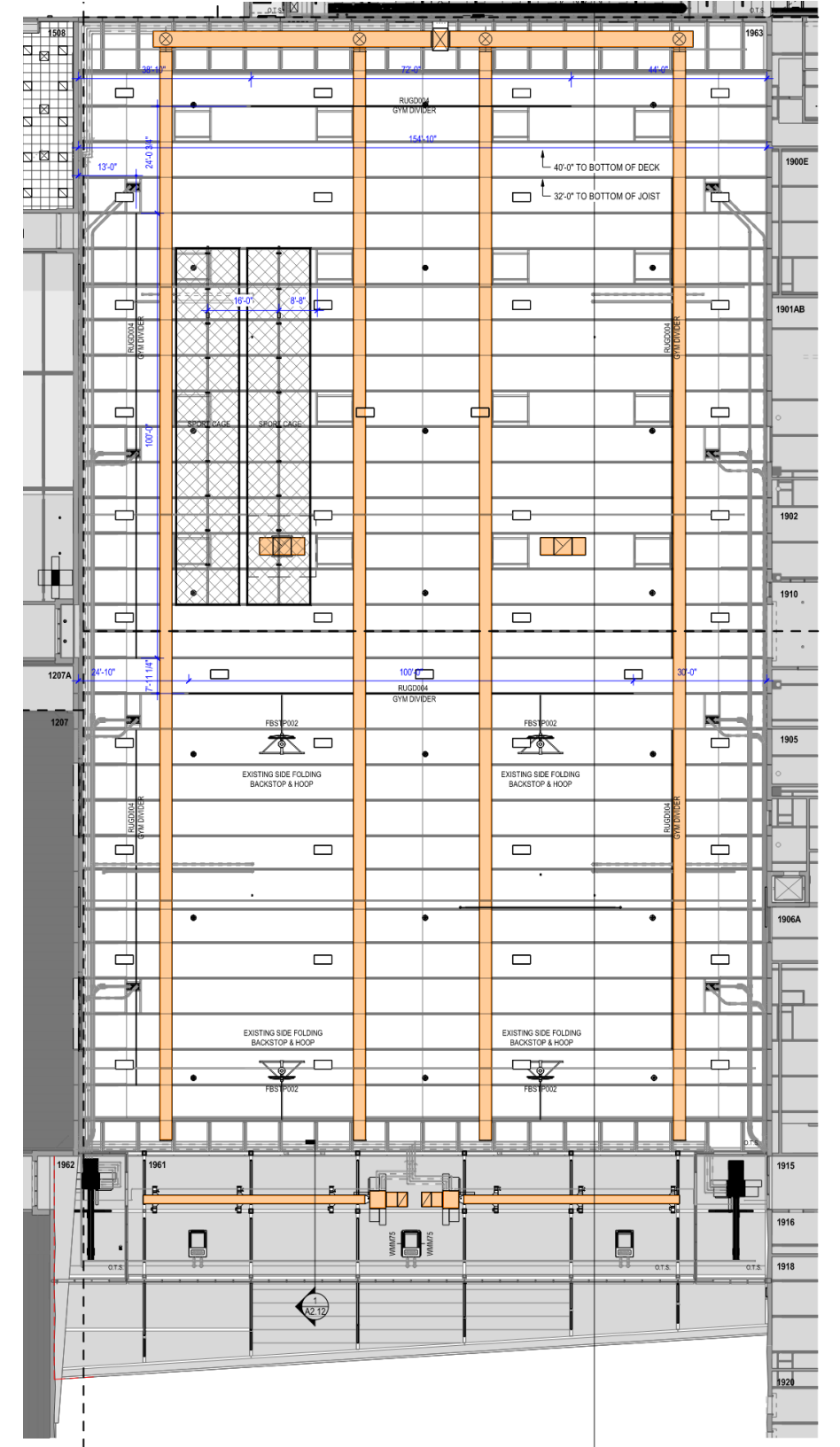
MEPT OVERVIEW



MAIN LEVEL



POOL MECHANICAL PENTHOUSE LEVEL



1 MAIN LEVEL OVERALL REFLECTED CEILING PLAN - PH 2 NANATORIUM & TPC
1/16" = 1'-0"



QUESTIONS?

INVISION

MARCH 2023