

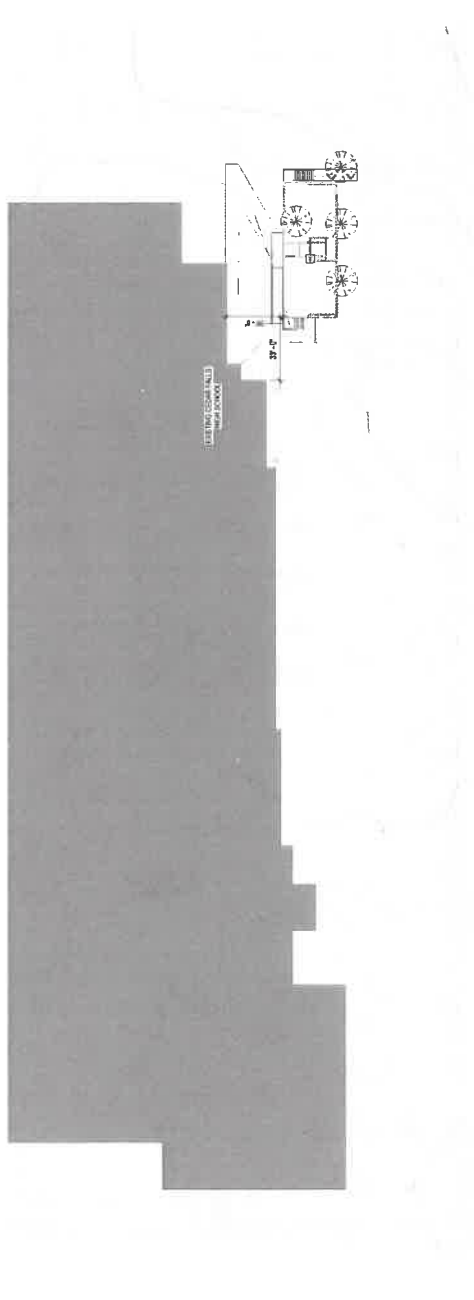
# CEDAR FALLS COMMUNITY SCHOOL DISTRICT CFHS PORTABLE RELOCATION

1015 DIVISION ST.  
CEDAR FALLS, IOWA 50613

95% REVIEW DOCUMENTS  
1.23.2018

### GENERAL NOTES:

1. ALL WORK SHALL COMPLY WITH APPLICABLE CODES AND ORDINANCES IN FORCE AT TIME OF CONSTRUCTION.
2. VERIFY ALL DIMENSIONS, EXISTING AND NEW CONDITIONS ON THE JOB BEFORE PROCEEDING WITH THE WORK. CORRECTIONS, IF ANY, ARE TO BE REFERRED TO THE ARCHITECT PRIOR TO START OF WORK.
3. UNLESS NOTED OTHERWISE, THE PLAN DIMENSIONS SHOWN ARE:
  - A. TO THE FACE OF WALLS IN WALLWAYS SHOWING CLEAR WIDTH
  - B. TO THE FACE OF WALLS IN WALLWAYS SHOWING CLEAR HEIGHT
  - C. TO THE FACE OF MASSWORK OR FACE OF CONCRETE WHERE INDICATED (FOURM)
    - I. IF DIMENSION POINT IS IN QUESTION, CONTACT ARCHITECT
4. THE CONTRACTOR SHALL VERIFY ALL DIMENSIONS AND EQUIPMENT, SUPPLIED AND INSTALLED BY MANUFACTURER OR OTHERS, PRIOR TO PROCEEDING WITH WORK.
5. SEE MECHANICAL AND ELECTRICAL DRAWINGS FOR ADDITIONAL NOTES AND DETAILS.
6. THE CONSTRUCTION AND CONTROL JOINTS IN CONCRETE SHALL BE LOCATED AS SHOWN OR DETAILED IN STRUCTURAL DRAWINGS. IF NOT SHOWN, PROVIDE JOINTING PLAN.
7. EXISTING PORTABLE MUST BE FIELD VERIFIED PRIOR TO MOVING FROM SOUTHDALE. REVIEW CONDITIONS BELOW PORTABLE COORDINATE TO MOVING COMPANY OR WHAT NEEDS TO STAY AND WHAT CAN BE REMOVED. PRIOR TO MOVING PORTABLE.
8. FIELD VERIFY EXISTING UTILITIES BELOW GRADE AT NEW SITE AT CEDAR FALLS HIGH SCHOOL PRIOR TO GRUBBING.



1 OVERALL SITE PLAN  
1" = 32'-0"

I hereby certify that the portion of this technical submission described below was prepared by me or under my direct supervision and that I am a duly licensed professional engineer in the State of Iowa.

Professional Engineer Name: \_\_\_\_\_ Date: \_\_\_\_\_  
 Signature: \_\_\_\_\_  
 Registration Number: \_\_\_\_\_  
 License State: IOWA  
 Project or Job as Covered by this Seal: \_\_\_\_\_

### MATERIALS LEGEND:

FINISH CONTROLS	CONCRETE	CONCRETE LUMBER	CEMENT CEILING PORTABLE LOCATION (TO BE MOVED FROM)
EXISTING CONTROLS	PRECAST CONCRETE	ALUMINUM	
BATH	ROOF INSULATION	FINISH LUMBER	
GRAVEL		BRICK	
BRICK		CONCRETE	
PLYFORM BOARD		STEEL	
MASSWORK		WOOD	
AGGREGATE SAND		CEMENT CEILING PORTABLE LOCATION (TO BE MOVED FROM)	
PLYWOOD			
CEMENT BOARD			
ROOF INSULATION			

### SHEET INDEX:

- I. GENERAL
- II. TITLE SHEET
- III. ARCHITECTURAL
- IV. MECHANICAL
- V. ELECTRICAL
- VI. CIVIL & SANITATION
- VII. CONCRETE
- VIII. STRUCTURE
- IX. FINISH
- X. PORTABLE
- XI. PORTABLE
- XII. PORTABLE
- XIII. PORTABLE
- XIV. PORTABLE
- XV. PORTABLE
- XVI. PORTABLE
- XVII. PORTABLE
- XVIII. PORTABLE
- XIX. PORTABLE
- XX. PORTABLE
- XXI. PORTABLE
- XXII. PORTABLE
- XXIII. PORTABLE
- XXIV. PORTABLE
- XXV. PORTABLE
- XXVI. PORTABLE
- XXVII. PORTABLE
- XXVIII. PORTABLE
- XXIX. PORTABLE
- XXX. PORTABLE
- XXXI. PORTABLE
- XXXII. PORTABLE
- XXXIII. PORTABLE
- XXXIV. PORTABLE
- XXXV. PORTABLE
- XXXVI. PORTABLE
- XXXVII. PORTABLE
- XXXVIII. PORTABLE
- XXXIX. PORTABLE
- XL. PORTABLE
- XLI. PORTABLE
- XLII. PORTABLE
- XLIII. PORTABLE
- XLIV. PORTABLE
- XLV. PORTABLE
- XLVI. PORTABLE
- XLVII. PORTABLE
- XLVIII. PORTABLE
- XLIX. PORTABLE
- L. PORTABLE
- LXI. PORTABLE
- LXII. PORTABLE
- LXIII. PORTABLE
- LXIV. PORTABLE
- LXV. PORTABLE
- LXVI. PORTABLE
- LXVII. PORTABLE
- LXVIII. PORTABLE
- LXIX. PORTABLE
- LXX. PORTABLE
- LXXI. PORTABLE
- LXXII. PORTABLE
- LXXIII. PORTABLE
- LXXIV. PORTABLE
- LXXV. PORTABLE
- LXXVI. PORTABLE
- LXXVII. PORTABLE
- LXXVIII. PORTABLE
- LXXIX. PORTABLE
- LXXX. PORTABLE
- LXXXI. PORTABLE
- LXXXII. PORTABLE
- LXXXIII. PORTABLE
- LXXXIV. PORTABLE
- LXXXV. PORTABLE
- LXXXVI. PORTABLE
- LXXXVII. PORTABLE
- LXXXVIII. PORTABLE
- LXXXIX. PORTABLE
- LXXXX. PORTABLE
- LXXXXI. PORTABLE
- LXXXXII. PORTABLE
- LXXXXIII. PORTABLE
- LXXXXIV. PORTABLE
- LXXXXV. PORTABLE
- LXXXXVI. PORTABLE
- LXXXXVII. PORTABLE
- LXXXXVIII. PORTABLE
- LXXXXIX. PORTABLE
- LXXXXX. PORTABLE



2 SOUTHDALE LOCATION MAP  
1/4" = 1'-0"



3 CFHS LOCATION MAP  
1/4" = 1'-0"

**INVISION**  
DESIGN & CONSTRUCTION

201 S. Johnson Street  
Cedar Falls, IA 50613  
319.233.9772 Fax  
www.invisionid.com

CONSULTANT:  
PROJECT NO. 17105  
PROJECT NAME:  
TITLE SHEET

CDAR FALLS COMMUNITY SCHOOL DISTRICT  
CFHS PORTABLE RELOCATION  
1015 DIVISION ST.  
CEDAR FALLS, IOWA 50613

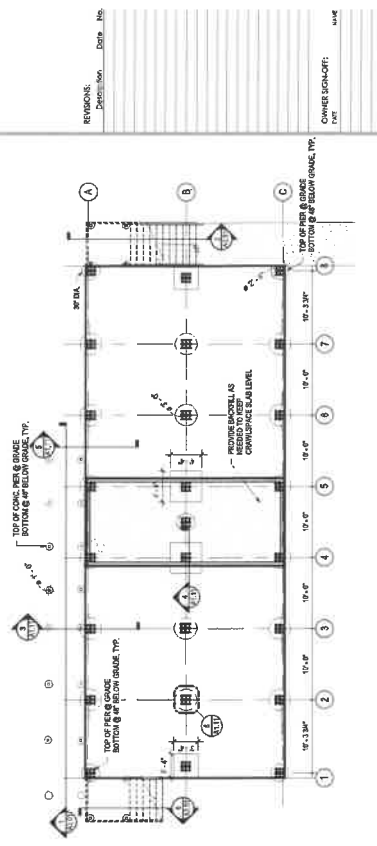
PROJECT NO. 17105  
DATE: 1.23.2018  
DRAWN BY: [Name]  
95% REVIEW DOCUMENTS  
SHEET NAME:  
TITLE SHEET

SHEET: G0.01  
OF 01

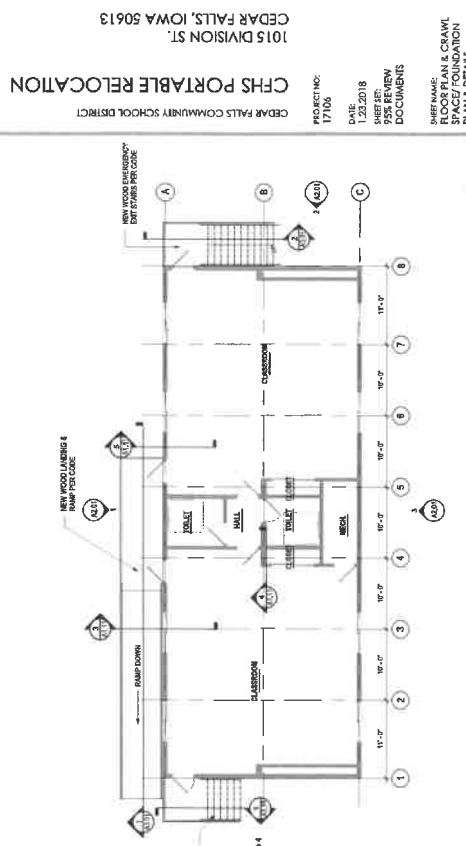


**GENERAL NOTES:**

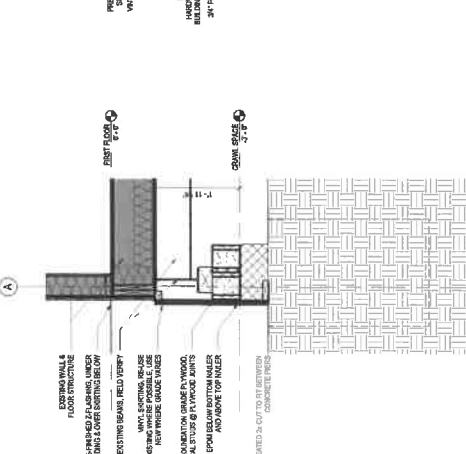
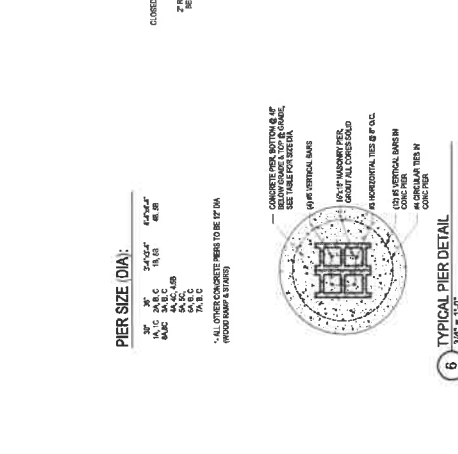
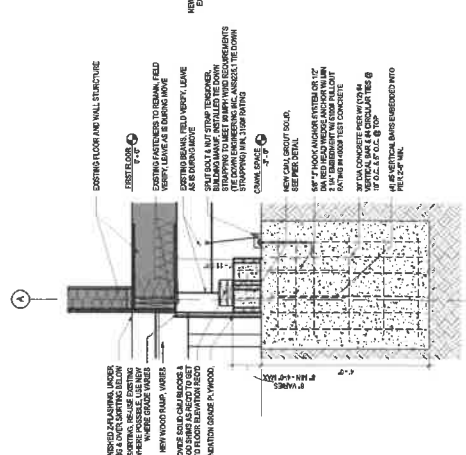
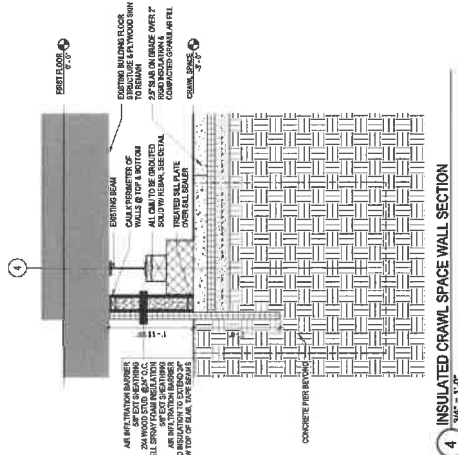
1. ANY DAMAGE TO EXISTING OR PROPOSED CLASSIFICATION MARKS MUST BE REPAIRED TO MATCH ADJACENT MARKS.
2. PORTABLES WILL BE MOVED AS (1) UNLESS COORDINATE BY MOVING OR (2) UNLESS THEY ARE TO BE REMOVED OR PORTABLES AND THAT MUST BE REPAIRED.



**2 CRAWL SPACE & FOUNDATION**  
1/8" = 1'-0"



**1 1ST FLOOR PLAN**  
1/8" = 1'-0"



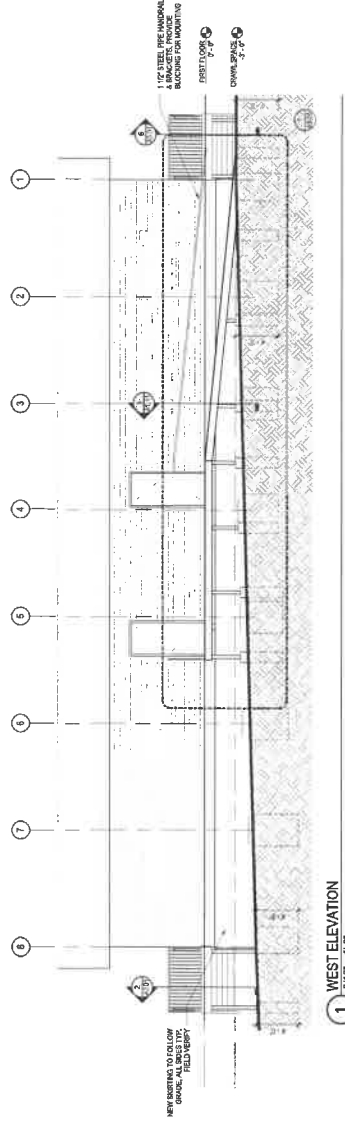
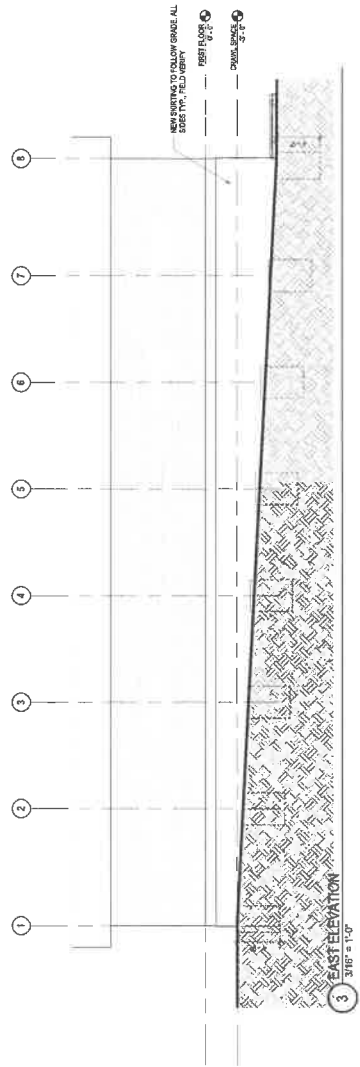
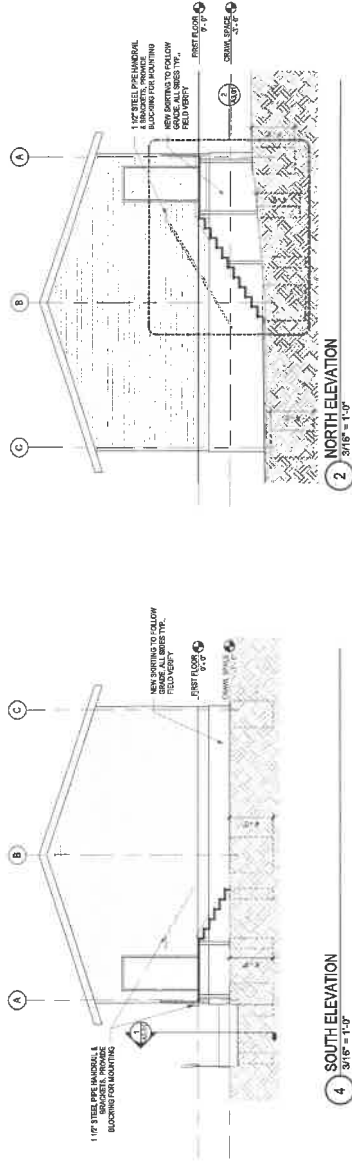
**PRELIMINARY NOT FOR CONSTRUCTION**

**FOR REFERENCE ONLY**

**PRELIMINARY NOT FOR CONSTRUCTION**

**GENERAL ELEVATION NOTES:**

1. FIELD VERIFY GRADE TO MATCH SITE PLAN PRIOR TO CONSTRUCTION.
2. STAIRS & RAMPS MUST MEET CODE.



**PRELIMINARY NOT FOR CONSTRUCTION** **FOR REFERENCE ONLY**

**INVISION**  
ARCHITECTURAL FIRM

601 S. Jefferson Street  
Suite 101  
Cedar Falls, IA 50613  
319.253.8417  
319.253.8419  
info@invisionfirm.com

CONSULTANT:  
ARCHITECT:  
ARCHITECTS:  
ARCHITECTS

REVISIONS:  
DATE: 10/18/17  
BY: [Redacted]

OWNER SIGN-OFF:  
DATE: 10/18/17  
BY: [Redacted]

CDAR FALLS COMMUNITY SCHOOL DISTRICT  
1015 DIVISION ST.  
CEDAR FALLS, IOWA 50613  
CFHS PORTABLE RELOCATION

PROJ. NO.: 17106  
DATE: 10/18/17  
90% REVIEW  
DOCUMENTS

SHEET NAME:  
EXTERIOR ELEVATIONS

SHEET:  
**A2.01**  
OF 01











<b>Cost Opinion</b>		
<b>Item</b>	<b>Description</b>	<b>Total</b>
	General Conditions 10%	\$ 15,000
	Bonds	\$ 1,500
	Permits	\$ 1,500
	General Construction Allowance	\$ 25,000
	Cast-in-Place Conc, Slabs, Masonry, etc.	\$ 25,000
	Steel Handrails & Rough Carpentry	\$ 15,000
	Thermal Insulation	\$ 2,000
	Vinyl Skirting	\$ 5,000
	EPDM Membrane	\$ 2,000
	MEP	\$ 35,000
	Earthwork & Backfill	\$ 13,000
	Seed/Sod	\$ 5,000
	Tree Demo	\$ 3,000
	Concrete Demo	\$ 8,000
<b>Construction Total</b>		<b>\$ 156,000</b>
<b>Bid Estimate</b>		<b>150-165k</b>
	Alysworth Moving	\$ 23,000
<b>Grand Total Estimate</b>		<b>175-190k</b>