

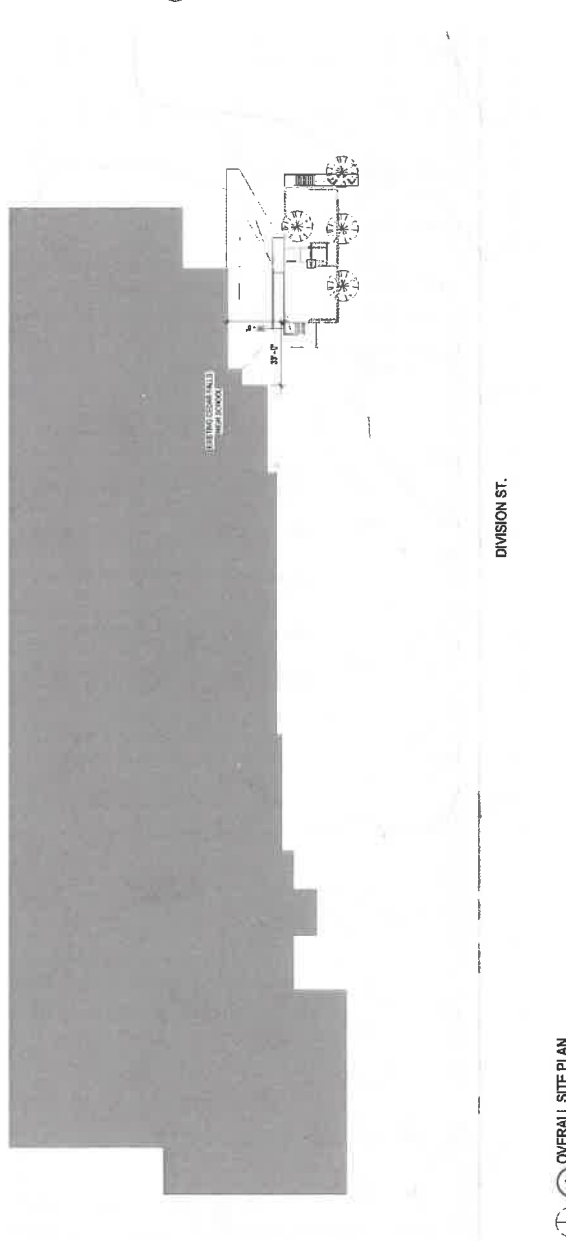
CEDAR FALLS COMMUNITY SCHOOL DISTRICT CFHS PORTABLE RELOCATION

1015 DIVISION ST.
CEDAR FALLS, IOWA 50613

95% REVIEW DOCUMENTS
1.23.2018

GENERAL NOTES:

1. ALL WORK SHALL COMPLY WITH APPLICABLE CODES AND ORDINANCES IN FORCE AT TIME OF CONSTRUCTION.
2. VERIFY ALL DIMENSIONS, EXISTING AND NEW CONDITIONS ON THE JOB BEFORE PROCEEDING WITH THE WORK. CORRECTIONS, IF ANY, ARE TO BE REFERRED TO THE ARCHITECT PRIOR TO START OF WORK.
3. UNLESS NOTED OTHERWISE, THE PLAN DIMENSIONS SHOWN ARE:
 - A. TO THE FACE OF WALLS IN WALLWAYS SHOWING CLEAR WIDTH
 - B. TO THE FACE OF WALLS IN WALLWAYS SHOWING CLEAR HEIGHT
 - C. TO THE FACE OF MASONRY OR FACE OF CONCRETE WHERE INDICATED (FOURM) IS INDICATED POINT IS IN QUESTION, CONTACT ARCHITECT
4. THE CONTRACTOR SHALL VERIFY ALL DIMENSIONS AND EQUIPMENT, SUPPLIED AND INSTALLED BY MANUFACTURER OR OTHERS, PRIOR TO PROCEEDING WITH WORK.
5. SEE MECHANICAL AND ELECTRICAL DRAWINGS FOR ADDITIONAL NOTES AND DETAILS.
6. THE CONSTRUCTION AND CONTROL JOINTS IN CONCRETE SLABS OR GRADE AS SHOWN OR DETAIL IN STRUCTURAL DRAWINGS, IF NOT SHOWN, SHOULD BE PLACED AS SHOWN IN THE DRAWINGS.
7. EXISTING PORTABLE MUST BE FIELD VERIFIED PRIOR TO MOVING FROM SOUTHDALE. REVIEW CONDITIONS BELOW PORTABLE COORDINATE TO MOVING COMPANY OR WHAT NEEDS TO BE DONE AND WHAT CAN BE REMOVED. PRIOR TO MOVING PORTABLE.
8. FIELD VERIFY EXISTING UTILITIES BELOW GRADE AT NEW SITE AT CEDAR FALLS HIGH SCHOOL PRIOR TO GRUBBING.



1 OVERALL SITE PLAN
1" = 32'-0"

I hereby certify that the portion of this technical submission described below was prepared by me or under my direct supervision and that I am a duly licensed professional engineer in the State of Iowa.

Professional Engineer Name: _____ Date: _____
 Signature: _____
 Registration Number: _____
 License State: IOWA
 Project or Job as Covered by this seal: _____

MATERIALS LEGEND:

FINISH CONTROLS	CONCRETE	CONCRETE LUMBER	STEEL	CONCRETE
EXISTING CONTROLS	GRAVEL	BRICK	CONCRETE	PRECAST CONCRETE
BATH	BRICK	CONCRETE	PRECAST CONCRETE	INSULATION
GRAVEL	CONCRETE	PAPER BOARD	ALUMINUM	INSULATION
BRICK	CONCRETE	CONCRETE	INSULATION	INSULATION
CONCRETE	PRECAST CONCRETE	INSULATION	INSULATION	INSULATION
PAPER BOARD	ALUMINUM	INSULATION	INSULATION	INSULATION
ALUMINUM	INSULATION	INSULATION	INSULATION	INSULATION
INSULATION	INSULATION	INSULATION	INSULATION	INSULATION

SHEET INDEX:

- 03.01 TITLE SHEET
- 04.01 ARCHITECTURAL
- 05.01 MECHANICAL
- 06.01 ELECTRICAL
- 07.01 CIVIL
- 08.01 CONCRETE
- 09.01 MASONRY
- 10.01 FINISH
- 11.01 INSULATION
- 12.01 PAINT
- 13.01 FLOORING
- 14.01 ROOFING
- 15.01 SITES
- 16.01 UTILITIES
- 17.01 GENERAL NOTES



2 SOUTHDALE LOCATION MAP
1/4" = 100'



3 CFHS LOCATION MAP
1/4" = 100'

INVISION
DESIGN & CONSTRUCTION

201. Invision Street
1015 Division St.
Cedar Falls, IA 50613
319.233.9772 Fax
www.invision-st.com

CONSULTANT:
PROJECT NO.:
SHEET NO.:
DATE:

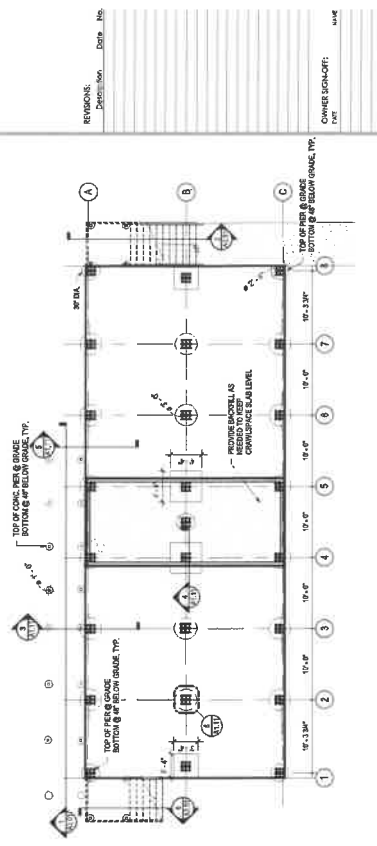
CFHS PORTABLE RELOCATION
CEDAR FALLS COMMUNITY SCHOOL DISTRICT
1015 DIVISION ST.
CEDAR FALLS, IOWA 50613

PROJECT NO.: 17105
DATE: 1.23.2018
SCALE: 95% REVIEW
DOCUMENTS
SHEET NAME: TITLE SHEET

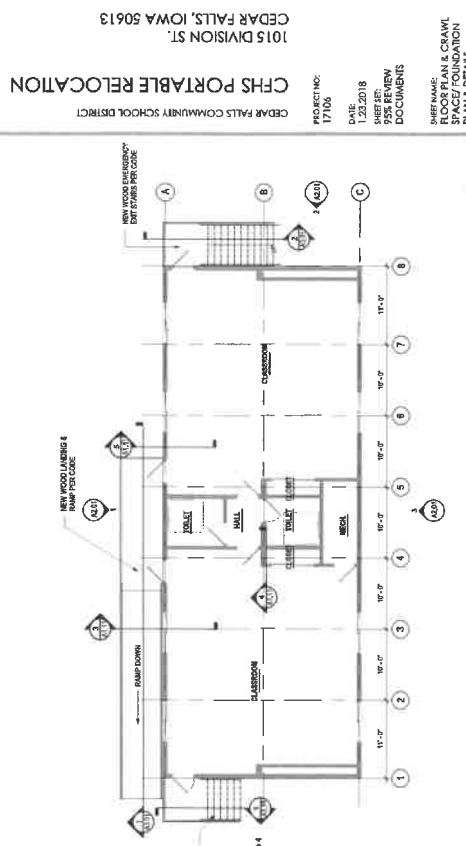
SHEET: G0.01
OF 01

GENERAL NOTES:

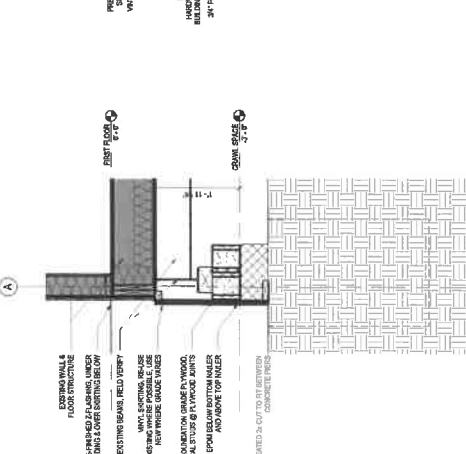
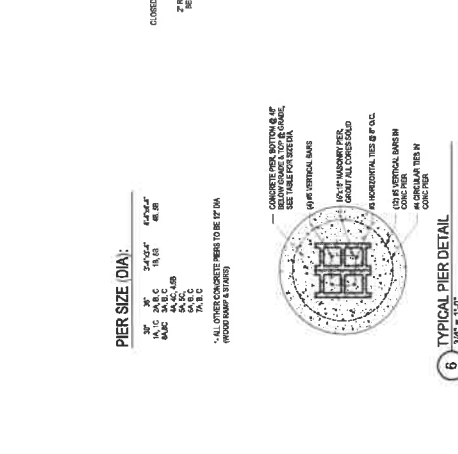
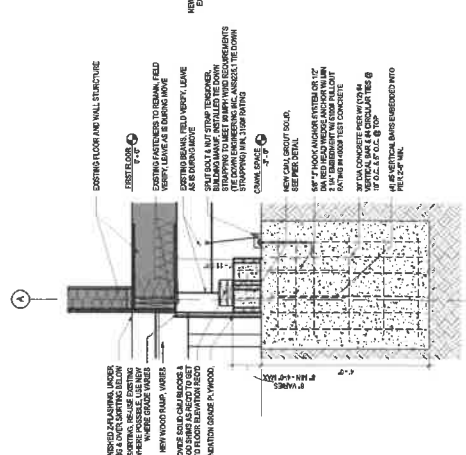
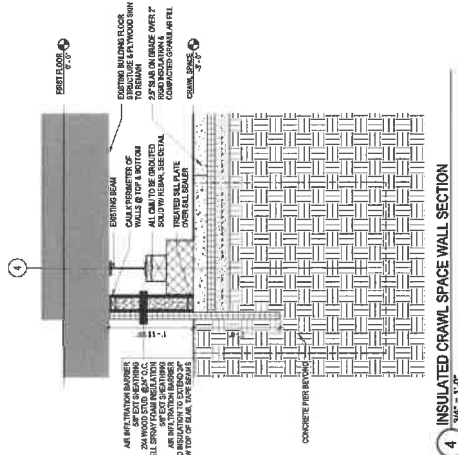
1. ANY DAMAGE TO EXISTING OR POTENTIAL CLASSIFIED ITEMS MUST BE REPAIRED TO MATCH ADJACENT FINISHES.
2. PORTABLES WILL BE MOVED AS (1) UNLESS COORDINATE BY MOVING OR (2) UNLESS THEY NEED TO REMAIN FOR PORTABLES AND THAT MUST BE REPAIRED.



2 CRAWL SPACE & FOUNDATION
1/8" = 1'-0"



1 1ST FLOOR PLAN
1/8" = 1'-0"



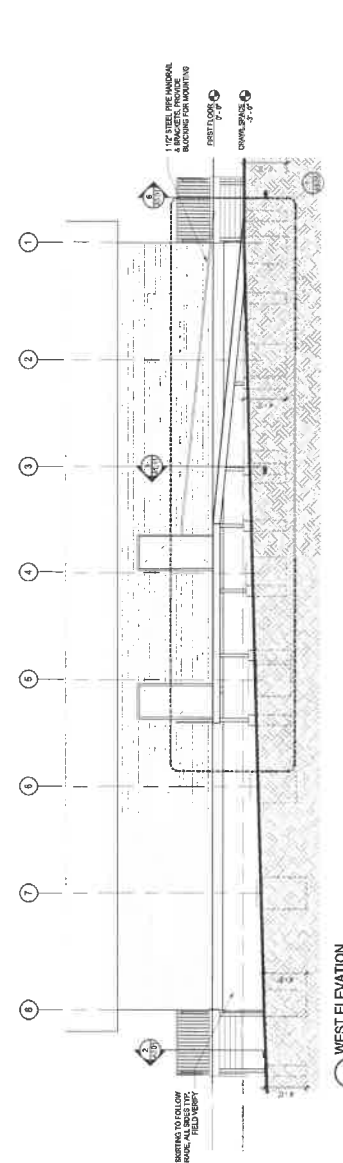
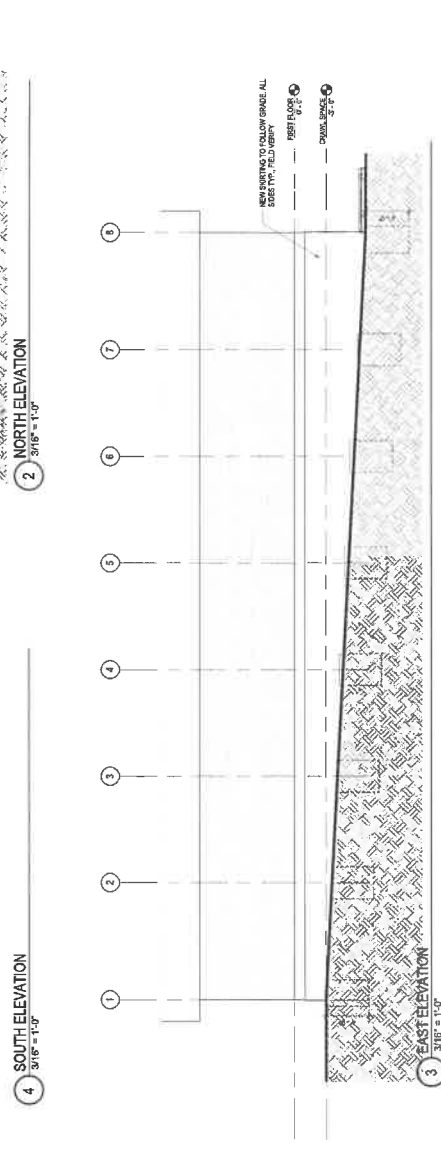
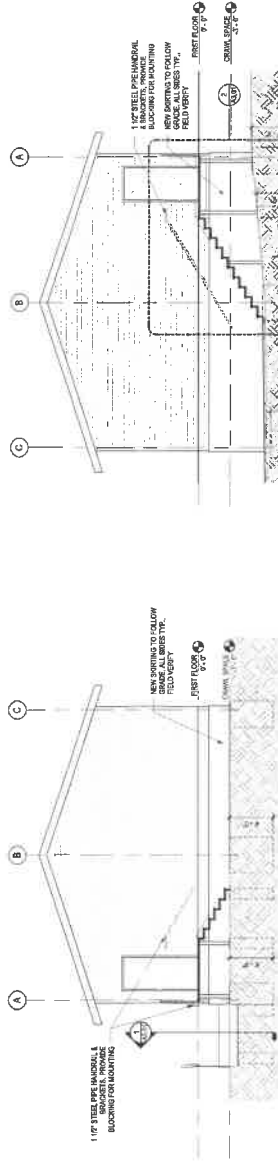
PRELIMINARY NOT FOR CONSTRUCTION

FOR REFERENCE ONLY

PRELIMINARY NOT FOR CONSTRUCTION

GENERAL ELEVATION NOTES:

1. FIELD VERIFY GRADE TO MATCH SITE PLAN PRIOR TO CONSTRUCTION.
2. STAIRS & RAMPS MUST MEET CODE.



PRELIMINARY NOT FOR CONSTRUCTION **FOR REFERENCE ONLY**

INVISION
ARCHITECTURAL FIRM

601 S. Jefferson Street
Suite 101
Cedar Falls, IA 50613
319.253.8417
319.253.8419
info@invisionfirm.com
www.invisionfirm.com

CONSULTANT:
ARCHITECT:
ARCHITECT:
ARCHITECT:

REVISIONS:
DATE: 11/20/18
BY: [Signature]

OWNER SIGN-OFF:
DATE: 11/20/18
BY: [Signature]

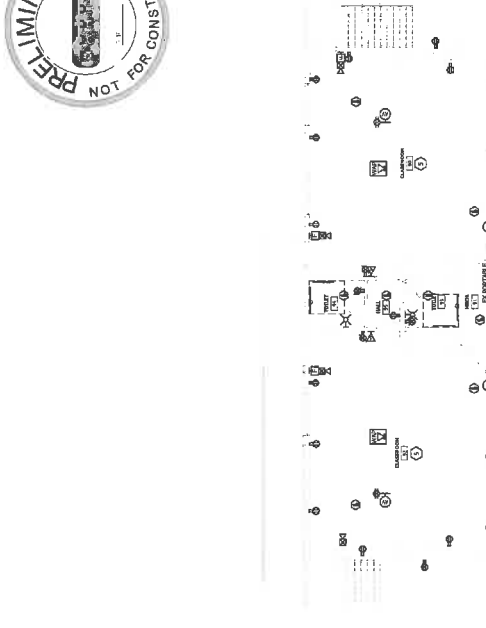
CDAR FALLS COMMUNITY SCHOOL DISTRICT
1015 DIVISION ST.
CEDAR FALLS, IOWA 50613

CFHS PORTABLE RELOCATION

PROJ. NO.: 17106
DATE: 11/20/18
90% REVIEW DOCUMENTS

SHEET NAME: EXTERIOR ELEVATIONS

SHEET: **A2.01**
OF 01



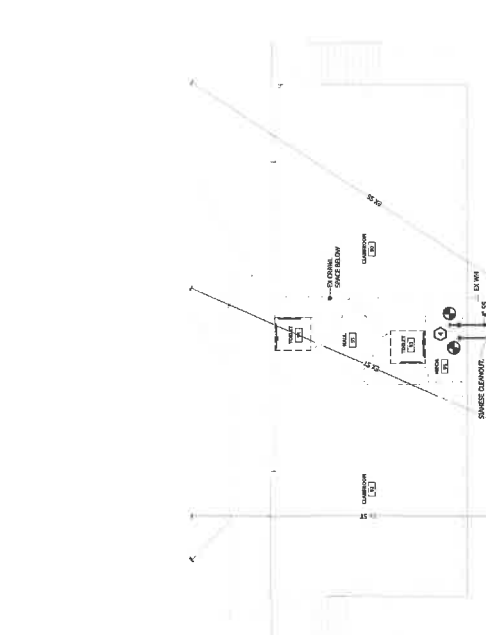
1 FIRST FLOOR ELECTRICAL PLAN
 1/4" = 1'-0"

GENERAL NOTES:

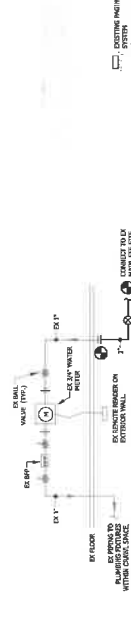
- ALL SERVICES SHALL BE INSTALLED IN ACCORDANCE WITH THE NATIONAL ELECTRICAL CODE (NEC) AND ALL APPLICABLE LOCAL CODES.
- ALL SERVICES SHALL BE INSTALLED AND TESTED IN ACCORDANCE WITH THE NATIONAL ELECTRICAL CODE (NEC) AND ALL APPLICABLE LOCAL CODES.
- CONDUIT SHALL BE INSTALLED IN ACCORDANCE WITH THE NATIONAL ELECTRICAL CODE (NEC) AND ALL APPLICABLE LOCAL CODES.
- CONDUIT SHALL BE INSTALLED IN ACCORDANCE WITH THE NATIONAL ELECTRICAL CODE (NEC) AND ALL APPLICABLE LOCAL CODES.
- CONDUIT SHALL BE INSTALLED IN ACCORDANCE WITH THE NATIONAL ELECTRICAL CODE (NEC) AND ALL APPLICABLE LOCAL CODES.

REFERENCED NOTES:

- SEE NOTES ON SHEET ME101 FOR GENERAL NOTES.
- SEE NOTES ON SHEET ME102 FOR GENERAL NOTES.
- SEE NOTES ON SHEET ME103 FOR GENERAL NOTES.
- SEE NOTES ON SHEET ME104 FOR GENERAL NOTES.
- SEE NOTES ON SHEET ME105 FOR GENERAL NOTES.



1 FIRST FLOOR MECHANICAL PLAN
 1/8" = 1'-0"



13 FIRST FLOOR LOW VOLTAGE OVERALL PLAN
 1/8" = 1'-0"

NOTE: VERIFY BUILDING DEPENDENT FOR ROUGH-IN WORK WITH ARCHITECT'S DRAWINGS.

Cost Opinion		
Item	Description	Total
	General Conditions 10%	\$ 15,000
	Bonds	\$ 1,500
	Permits	\$ 1,500
	General Construction Allowance	\$ 25,000
	Cast-in-Place Conc, Slabs, Masonry, etc.	\$ 25,000
	Steel Handrails & Rough Carpentry	\$ 15,000
	Thermal Insulation	\$ 2,000
	Vinyl Skirting	\$ 5,000
	EPDM Membrane	\$ 2,000
	MEP	\$ 35,000
	Earthwork & Backfill	\$ 13,000
	Seed/Sod	\$ 5,000
	Tree Demo	\$ 3,000
	Concrete Demo	\$ 8,000
Construction Total		\$ 156,000
Bid Estimate		150-165k
	Alysworth Moving	\$ 23,000
Grand Total Estimate		175-190k